

"-38" SUFFIX = HOLE FOR ϕ .375 BOLT.
 "-12" SUFFIX = HOLE FOR ϕ .500 BOLT.

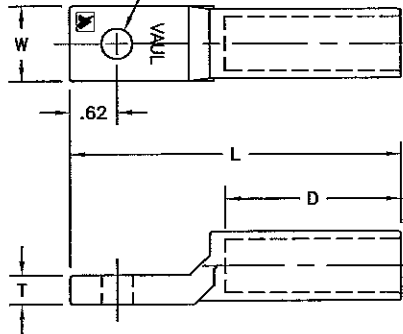


FIGURE 1

"-12BN" SUFFIX = 2 NEMA SPACED HOLES FOR ϕ .500 BOLTS.

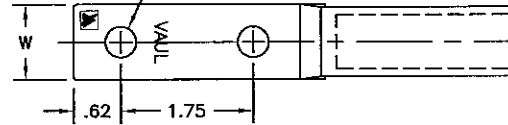


FIGURE 2

NOTES:

1. MATERIAL: ALUMINUM.
2. LUGS ARE PREFILLED WITH A "VERSA-SEAL" RUBBER COMPATIBLE INHIBITOR & SEALED WITH PLASTIC END CAPS.
3. END CAPS ARE WIRE SIZE COLOR CODED THROUGH 4/0.
4. FOR USE WITH EITHER VERSA-CRIMP OR CONVENTIONAL COMPRESSION TOOLS.
5. LUGS ARE METAL MARKED TO INDICATE RECOMMENDED CONDUCTORS AND CRIMP DIES.
6. ADD "TP" SUFFIX FOR TIN PLATED VERSIONS.

CATALOG NUMBER	FIG. NO.	CONDUCTOR RANGE FOR AWG OR MCM			CRIMP DIES/ VC-TOOL	COLOR CODE	DIMENSIONS IN INCHES				
		FOR VERSA-CRIMP COMPRESSION TOOLS	FOR OTHER RECOMMENDED COMPRESSION TOOLS				L	W	T	D	
			ACSR	STRANDED (SOLID)							COMPACT
VAUL-8-38	1	#8 STR. AL-CU (#6 SOL)	---	#8 AL-CU (#6 SOL.)	---	GREEN	3.06	.90	.27	1.25	
VAUL-8-12			---	#6 AL-CU (#4 SOL.)	---						
VAUL-6-38	1	#8 STR.-#4 SOL. AL-CU #6 ACSR	#6(6/1)	#6 AL-CU (#4 SOL.)	---	BLUE	3.06	.90	.27	1.25	
VAUL-6-12							4.80	1.00	.31		
VAUL-6-12BN	2										
VAUL-4-38	1	#8 STR.-#2 SOL. AL-CU #6-#4 ACSR	#4(6/1),(7/1)	#4 AL-CU (#2 SOL.)	#2	ORANGE	3.06	.90	.27	1.25	
VAUL-4-12							4.80	1.00	.31		
VAUL-4-12BN	2	#6-#2 COMP									
VAUL-1-38	1	#8 STR.-#1 STR. AL-CU #6-#2 ACSR	#2(6/1),(7/1)	#2-#1 AL-CU	#1	RED	3.06	.90	.27	1.25	
VAUL-1-12							4.80	1.00	.31		
VAUL-1-12BN	2	#6-#1 COMP									
VAUL-1/0-38	1	#8 STR.-1/0 STR. AL-CU #6-1/0 ACSR	1/0(6/1)	1/0 AL-CU	1/0-2/0	YELLOW	3.06	.90	.27	1.25	
VAUL-1/0-12							4.80	1.00	.31		
VAUL-1/0-12BN	2	#6-2/0 COMP									

41360	7/31/11	BAF	SD
EC #	DATE	CHG BY	RESP ENG
DESC OF DWG CREATE AUTOCAD DRAWINGS.			
REASON (S) FOR CHANGE: --			
DISPOSITION OF MAT'L: --			

ANDERSON
 TOLERANCE CHART
 0.0000 - 0.0001 ANGLES \pm .30°
 0.0001 - 0.0002 DO NOT USE
 0.0002 - 0.0005 FRACTIONS

CONFIDENTIAL: THIS DRAWING AND ITS CONTENTS ARE CONFIDENTIAL AND THE EXCLUSIVE PROPERTY OF HUBBELL POWER SYSTEMS. NO PUBLICATION, DISTRIBUTION OR COPIES MAY BE MADE WITHOUT THE WRITTEN CONSENT OF HUBBELL POWER SYSTEMS.
 HUBBELL POWER SYSTEMS UNPUBLISHED
 ALL RIGHTS RESERVED UNDER THE COPYRIGHT LAWS.

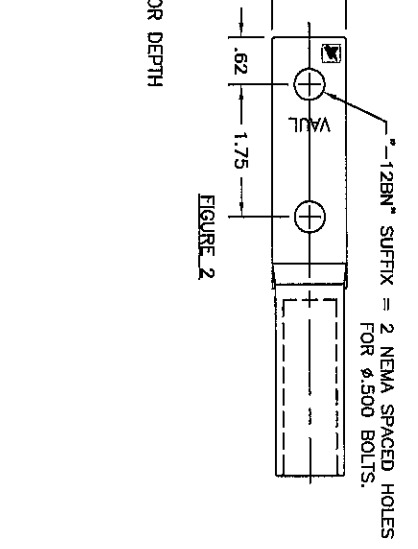
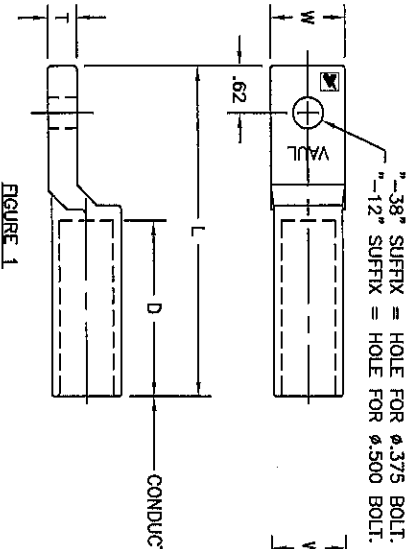
HUBBELL POWER SYSTEMS

TITLE: MIN. TENSION ALUMINUM COMPRESSION TERMINALS

SIZE	DWG NO.	CAT / PART / ASSY NO.	REV
B	CC-11363-1	VAUL & VAULH	9

DO NOT SCALE THIS DRAWING

DRN BY WJI	DATE 9/23/77	SHEET 1 OF 3
------------	--------------	--------------



CATALOG NUMBER	QTY	FOR VERSA-CRIMP COMPRESSION TOOLS	CONDUCTOR RANGE FOR AWG OR MCM			CRIMP DIES/ VC-TOOL	COLOR CODE	DIMENSIONS IN INCHES		
			ACSR	STRANDED (SOLID)	COMPACT			L	W	T
VAULH-6-12	1	#8 STR-#4 SOL. AL-CU #6 ACSR	#6(6/1)	#6 AL-CU (#4 SOL.)	#6	BLUE	3.25	.96	.25	1.43
VAULH-4-12	1	#8 STR-#2 SOL. AL-CU #6-#4 ACSR #6-#4 COMP	#4(6/1),(7/1)	#4 AL-CU (#2 SOL.)	#4	ORANGE	3.25	.96	.25	1.43
VAULH-1-12	1	#8-#1 AL-CU #6-#2 ACSR #6-#1 COMP	#2(6/1),(7/1)	#2-#1 AL-CU	#2-#1	RED	3.25	.96	.25	1.43
VAULH-1-12BN	2	#4-1/0 AL-CU	1/0(6/1)	1/0 AL-CU	1/0-2/0	YELLOW	5.75	1.25	.25	1.87
VAULH-1/0-38	1	#4-1/0 ACSR	1/0(6/1)	1/0 AL-CU	1/0-2/0	YELLOW	3.25	.96	.25	1.43
VAULH-1/0-12	2	#4-2/0 COMP	2/0(6/1)	2/0 AL-CU	3/0	GRAY	5.75	1.25	.25	1.87
VAUL-2/0-38	1	#4-2/0 AL-CU	2/0(6/1)	2/0 AL-CU	3/0	GRAY	3.25	.96	.25	1.43
VAUL-2/0-12	2	#4-2/0 ACSR	2/0(6/1)	2/0 AL-CU	3/0	GRAY	5.75	1.25	.25	1.87
VAUL-2/0-12BN	2	#4-3/0 COMP	3/0(6/1)	3/0 AL-CU	4/0	BLACK	5.75	1.25	.25	1.87
VAUL-3/0-12	1	#4-3/0 AL-CU	3/0(6/1)	3/0 AL-CU	4/0	BLACK	3.25	.96	.25	1.43
VAUL-3/0-12BN	2	#4-4/0 ACSR	4/0(6/1)	4/0-250 AL-CU	250-300	PINK	5.25	1.25	.25	1.87
VAUL-4/0-38	1	#4-250 AL-CU	4/0(6/1)	4/0-250 AL-CU	250-300	PINK	3.25	.96	.25	1.43
VAUL-4/0-12	1	#5-4/0 ACSR	4/0(6/1)	4/0-250 AL-CU	250-300	PINK	3.25	.96	.25	1.43
VAUL-4/0-12BN	2	#4-300 COMP	4/0(6/1)	4/0-250 AL-CU	250-300	PINK	5.25	1.25	.25	1.87

EC #	DATE	CHK BY	RESP ENG
DESCRIBE THE JOB			
SER. SHEET 1			
REASON FOR CHANGE			
DISPOSITION OF MAT'L			

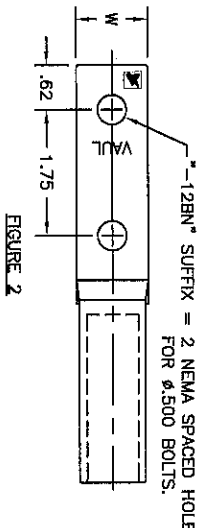
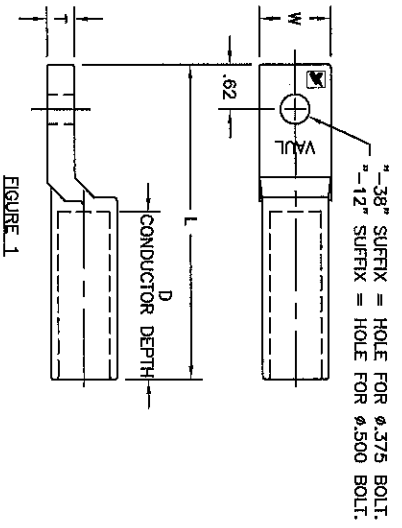
ANDERSTON
TOLERANCE CHART
FRACTIONS
0.0004 - 0.0015
0.0015 - 0.0030
0.0030 - 0.0045
0.0045 - 0.0060
0.0060 - 0.0075
0.0075 - 0.0090
0.0090 - 0.0105
0.0105 - 0.0120
0.0120 - 0.0135
0.0135 - 0.0150
0.0150 - 0.0165
0.0165 - 0.0180
0.0180 - 0.0195
0.0195 - 0.0210
0.0210 - 0.0225
0.0225 - 0.0240
0.0240 - 0.0255
0.0255 - 0.0270
0.0270 - 0.0285
0.0285 - 0.0300
0.0300 - 0.0315
0.0315 - 0.0330
0.0330 - 0.0345
0.0345 - 0.0360
0.0360 - 0.0375
0.0375 - 0.0390
0.0390 - 0.0405
0.0405 - 0.0420
0.0420 - 0.0435
0.0435 - 0.0450
0.0450 - 0.0465
0.0465 - 0.0480
0.0480 - 0.0495
0.0495 - 0.0510
0.0510 - 0.0525
0.0525 - 0.0540
0.0540 - 0.0555
0.0555 - 0.0570
0.0570 - 0.0585
0.0585 - 0.0600
0.0600 - 0.0615
0.0615 - 0.0630
0.0630 - 0.0645
0.0645 - 0.0660
0.0660 - 0.0675
0.0675 - 0.0690
0.0690 - 0.0705
0.0705 - 0.0720
0.0720 - 0.0735
0.0735 - 0.0750
0.0750 - 0.0765
0.0765 - 0.0780
0.0780 - 0.0795
0.0795 - 0.0810
0.0810 - 0.0825
0.0825 - 0.0840
0.0840 - 0.0855
0.0855 - 0.0870
0.0870 - 0.0885
0.0885 - 0.0900
0.0900 - 0.0915
0.0915 - 0.0930
0.0930 - 0.0945
0.0945 - 0.0960
0.0960 - 0.0975
0.0975 - 0.0990
0.0990 - 0.1005
0.1005 - 0.1020
0.1020 - 0.1035
0.1035 - 0.1050
0.1050 - 0.1065
0.1065 - 0.1080
0.1080 - 0.1095
0.1095 - 0.1110
0.1110 - 0.1125
0.1125 - 0.1140
0.1140 - 0.1155
0.1155 - 0.1170
0.1170 - 0.1185
0.1185 - 0.1200
0.1200 - 0.1215
0.1215 - 0.1230
0.1230 - 0.1245
0.1245 - 0.1260
0.1260 - 0.1275
0.1275 - 0.1290
0.1290 - 0.1305
0.1305 - 0.1320
0.1320 - 0.1335
0.1335 - 0.1350
0.1350 - 0.1365
0.1365 - 0.1380
0.1380 - 0.1395
0.1395 - 0.1410
0.1410 - 0.1425
0.1425 - 0.1440
0.1440 - 0.1455
0.1455 - 0.1470
0.1470 - 0.1485
0.1485 - 0.1500
0.1500 - 0.1515
0.1515 - 0.1530
0.1530 - 0.1545
0.1545 - 0.1560
0.1560 - 0.1575
0.1575 - 0.1590
0.1590 - 0.1605
0.1605 - 0.1620
0.1620 - 0.1635
0.1635 - 0.1650
0.1650 - 0.1665
0.1665 - 0.1680
0.1680 - 0.1695
0.1695 - 0.1710
0.1710 - 0.1725
0.1725 - 0.1740
0.1740 - 0.1755
0.1755 - 0.1770
0.1770 - 0.1785
0.1785 - 0.1800
0.1800 - 0.1815
0.1815 - 0.1830
0.1830 - 0.1845
0.1845 - 0.1860
0.1860 - 0.1875
0.1875 - 0.1890
0.1890 - 0.1905
0.1905 - 0.1920
0.1920 - 0.1935
0.1935 - 0.1950
0.1950 - 0.1965
0.1965 - 0.1980
0.1980 - 0.1995
0.1995 - 0.2010
0.2010 - 0.2025
0.2025 - 0.2040
0.2040 - 0.2055
0.2055 - 0.2070
0.2070 - 0.2085
0.2085 - 0.2100
0.2100 - 0.2115
0.2115 - 0.2130
0.2130 - 0.2145
0.2145 - 0.2160
0.2160 - 0.2175
0.2175 - 0.2190
0.2190 - 0.2205
0.2205 - 0.2220
0.2220 - 0.2235
0.2235 - 0.2250
0.2250 - 0.2265
0.2265 - 0.2280
0.2280 - 0.2295
0.2295 - 0.2310
0.2310 - 0.2325
0.2325 - 0.2340
0.2340 - 0.2355
0.2355 - 0.2370
0.2370 - 0.2385
0.2385 - 0.2400
0.2400 - 0.2415
0.2415 - 0.2430
0.2430 - 0.2445
0.2445 - 0.2460
0.2460 - 0.2475
0.2475 - 0.2490
0.2490 - 0.2505
0.2505 - 0.2520
0.2520 - 0.2535
0.2535 - 0.2550
0.2550 - 0.2565
0.2565 - 0.2580
0.2580 - 0.2595
0.2595 - 0.2610
0.2610 - 0.2625
0.2625 - 0.2640
0.2640 - 0.2655
0.2655 - 0.2670
0.2670 - 0.2685
0.2685 - 0.2700
0.2700 - 0.2715
0.2715 - 0.2730
0.2730 - 0.2745
0.2745 - 0.2760
0.2760 - 0.2775
0.2775 - 0.2790
0.2790 - 0.2805
0.2805 - 0.2820
0.2820 - 0.2835
0.2835 - 0.2850
0.2850 - 0.2865
0.2865 - 0.2880
0.2880 - 0.2895
0.2895 - 0.2910
0.2910 - 0.2925
0.2925 - 0.2940
0.2940 - 0.2955
0.2955 - 0.2970
0.2970 - 0.2985
0.2985 - 0.3000

HUBBELL POWER SYSTEMS
MIN. TENSION ALUMINUM
COMPRESSION TERMINALS

SIZE DWG NO. CAT / PART / ASST. NO. REV
B CC-11363-2 VAUL & VAULH 9

DO NOT SCALE THIS DRAWING
DATE 9/23/77 SHEET 2 OF 3

CATALOG NUMBER	QTY	FOR VERSA-CRIMP COMPRESSION TOOLS	CONDUCTOR RANGE FOR AWG OR MCM		CRIMP TOOLS	DIMENSIONS IN INCHES			
			FOR OTHER RECOMMENDED COMPRESSION (SOLID)	COMPACT		L	W	T	D
VAUL-250-12	1	1/0-250 STR. AL-CU	250 AL-CU	300	EE-12A BURNDY 228 KEBNEY 29/22 178 TH-87 BLACKBURN B61EA	4.59	1.25	.37	2.44
VAUL-250-12BN	2	1/0-4/0 ACSR	250 AL-CU	300	EE-12A BURNDY 228 KEBNEY 29/22 178 TH-87 BLACKBURN B61EA	6.34	1.25	.37	2.44
VAUL-300-12	1	2/0-300 STR. AL-CU	300 AL-CU	350	EE-12A BURNDY 228 KEBNEY 29/22 178 TH-87 BLACKBURN B61EA	4.59	1.25	.37	2.44
VAUL-300-12BN	2	2/0-266.8(1%) ACSR	300 AL-CU	350	EE-12A BURNDY 228 KEBNEY 29/22 178 TH-87 BLACKBURN B61EA	6.34	1.25	.37	2.44
VAUL-350-12	1	2/0-350 STR. AL-CU	350 AL-CU	400	EE-12A BURNDY 228 KEBNEY 29/22 178 TH-87 BLACKBURN B61EA	4.59	1.25	.37	2.44
VAUL-350-12BN	2	2/0-336.4(1%) ACSR	350 AL-CU	400	EE-12A BURNDY 228 KEBNEY 29/22 178 TH-87 BLACKBURN B61EA	6.34	1.25	.37	2.44
VAUL-360-12	1	4/0-350 STR. AL-CU	300-350 AL-CU	350-400	EE-13A BURNDY 316,472 695,705 KEBNEY 1-1/8 58 BLACKBURN B60EA	4.44	1.25	.37	2.37
VAUL-360-12BN	2	4/0-400 COMP	300-350 AL-CU	350-400	EE-13A BURNDY 316,472 695,705 KEBNEY 1-1/8 58 BLACKBURN B60EA	6.18	1.25	.37	2.37
VAUL-400-12	1	4/0-400 STR. AL-CU	350-400 AL-CU	450-500	EE-14A BURNDY 336,516 724,786 KEBNEY 1-5/16 106 BLACKBURN V63	4.44	1.25	.37	2.37
VAUL-400-12BN	2	4/0-397.5(1%) ACSR	350-400 AL-CU	450-500	EE-14A BURNDY 336,516 724,786 KEBNEY 1-5/16 106 BLACKBURN V63	6.18	1.25	.37	2.37
VAUL-500-12	1	4/0-500 STR. AL-CU	450-500 AL	550-600	EE-14A BURNDY 336,516 724,786 KEBNEY 1-5/16 106 BLACKBURN V63	4.44	1.25	.37	2.37
VAUL-500-12BN	2	4/0-477(1%) ACSR	450-500 AL	550-600	EE-14A BURNDY 336,516 724,786 KEBNEY 1-5/16 106 BLACKBURN V63	6.81	1.50	.37	2.88
VAUL-600-12BN	2	300-600 STR. AL	550-600 AL	650-700	EE-14A BURNDY 336,516 724,786 KEBNEY 1-5/16 106 BLACKBURN V63	6.87	1.37	.56	3.00
VAUL-750-12BN	2	500-750 STR. AL	700-750 AL	750-800	EE-14A BURNDY 336,516 724,786 KEBNEY 1-5/16 106 BLACKBURN V63	6.87	1.37	.56	3.00
VAULH-500-12BN	2	4/0-500 STR. AL-CU	450-500 AL-CU	550-600	EE-14A BURNDY 336,516 724,786 KEBNEY 1-5/16 106 BLACKBURN V63	4.77(2%) 477(2%) 715.5(2%)	1.60	.63	3.19
VAULH-700-12BN	2	350-700 STR. AL	600-700 AL	750-800	EE-14A BURNDY 336,516 724,786 KEBNEY 1-5/16 106 BLACKBURN V63	3.97.5(1%) 477(1%) 636(1%)	1.60	.63	3.19
VAUL-800-12BN	2	500-800 STR. AL	700-800 AL	900	EE-14A BURNDY 336,516 724,786 KEBNEY 1-5/16 106 BLACKBURN V63	5.56.5(2%) 605(2%) 715.5(2%)	1.60	.63	3.19
VAUL-1000-12BN	2	650-1000 STR. AL	900-1000 AL	-	EE-14A BURNDY 336,516 724,786 KEBNEY 1-5/16 106 BLACKBURN V63	7.95(2%) 900(2%) 954(2%)	1.60	.63	3.19



EC #	DATE	CHG BY	RESP ENG

ANDERSON TOLERANCE CHART
 1000-1/2-2008
 1000-1/2-2008

HUBBELL POWER SYSTEMS
 MIN. TENSION ALUMINUM
 COMPRESSION TERMINALS

CONVENTIONAL TERMINALS AND THE EXCLUSIVE PROPERTY OF HUBBELL POWER SYSTEMS. NO REPRODUCTION OR TRANSMISSION OF THIS DRAWING WITHOUT THE WRITTEN CONSENT OF HUBBELL POWER SYSTEMS. UNPUBLISHED RIGHTS RESERVED UNDER THE COPYRIGHT LAWS.

SIZE: B
 DWG NO.: CC-11363-3
 QMT / PART / ASST NO.: VAUL & VAULH
 DATE: 9/23/77
 SHEET: 3 OF 3